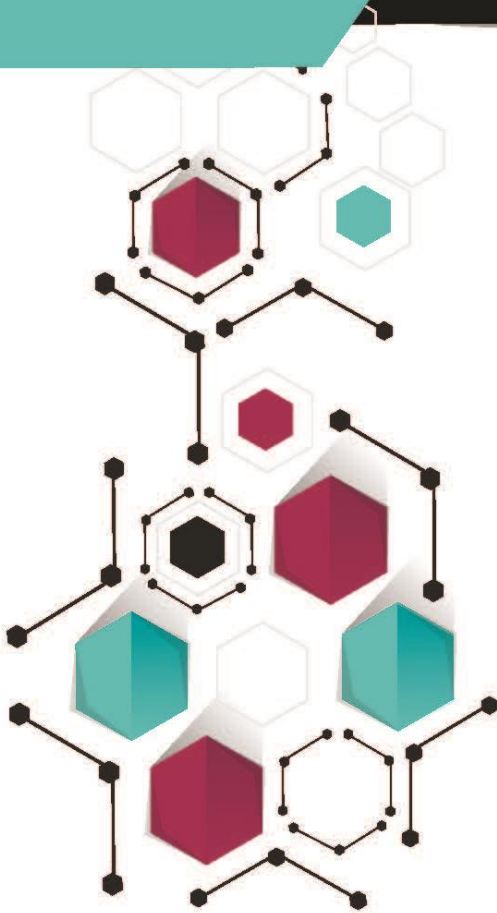




It's the way we're *wired*



GENERAL INFO



info@belgiumcampus.ac.za



+27 10 593 5368



138 Berg Avenue
Heatherdale (Akasia) Pretoria,
South Africa



@BelgiumCampusSA

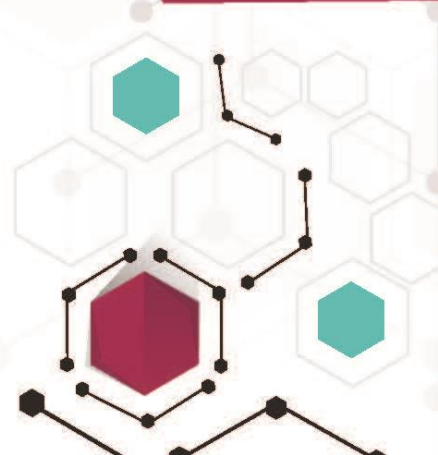


@BelgiumCampus



/Belgium Campus

www.belgiumcampus.ac.za



MISSION	2
VISION	2
VISION ON QUALITY ASSURANCE	2
CHRISTIAN VALUES	2
ACCREDITATION AND RECOGNITION	3
STAFF	3
DIRECTORS	3
MEMBERS	3
DEAN: FACULTY OF INFORMATION TECHNOLOGY	3
ADMINISTRATIVE DEAN: FACULTY OF INFORMATION TECHNOLOGY	3
ACADEMIC STAFF:	4
GUEST LECTURERS	5
PARTNERSHIP AGREEMENTS	5
CONTACT DETAILS	5
OFFICE HOURS	5
TSHWANE CAMPUS (HEAD OFFICE)	6
EKURHULENI CAMPUS	6
NELSON MANDELA BAY CAMPUS	6
DIGITAL CONTACT DETAILS:	6
TSHWANE CAMPUS MAP (HEAD OFFICE)	7
EKURHULENI CAMPUS	8
NELSON MANDELA BAY CAMPUS	8

Mission

Our 'Official' mission statement:

To supply the industry with highly qualified and experienced Information Technology personnel through the provision of high quality, practice-orientated education and training of an international standard on a variety of aspects. This will contribute towards economic growth and the creation of wealth.

Put differently in less formal terms, it comes down to the following:

We offer our students the best business-orientated IT education possible; when they graduate, they can immediately add value to any company that employs them. To enable us to offer our students a superior education, we need to partner with as many businesses as possible to ensure we tailor our curriculum to their needs and obtain their financial assistance to give as many students as possible access to Belgium Campus. In return, we'll supply them with employees who have the skills to make any business and the economy thrive.

Vision

To transform South Africa into a prosperous region there is a great need for highly skilled graduates who have the right competences, and higher education has a great role to play in this development process. Belgium Campus realises that it has to do things differently from the traditional model that Universities operate in. The strategy of a University has a significant impact on regional development through cooperation with industry and business, by educating and delivering the necessary workforce on all different levels. Belgium Campus is at the forefront of what a modern University should be, by investing in people, attracting investors, running community programmes and engaging with the local community and authorities.

Belgium Campus conducts its operations in the Spirit of Ubuntu – for the benefit of all.

Vision on Quality Assurance

Belgium Campus's vision is to become a trademark that is associated with quality; quality in our educational offerings, day to day operations, and in applied research. To attain this, quality must come from within through strategic management and be implemented by the people who believe in this common vision. This vision is shared by academia, students, the industry, and local policy making authorities. With education in transition, Belgium Campus's dedication to quality and the pursuit of excellence in everything we do, will ensure that we stay at the forefront, equipping our students with top of the line academic qualifications and practical knowledge. In turn the industry will gain employees of the highest calibre.

Christian Values

Our Christian vision on humanity and society ensures an open climate and promotes cooperation between different cultures, races and religions. We place special emphasis on the importance of human dignity and the protection of the weaker. In this way we develop an intellectual atmosphere that is at the same time conducive to spiritual development. This is essential to prevent the evolution of science and technology creating a humanity gap.

Accreditation and Recognition

The Belgium Campus I NPC, PBO Reference No: 930009313, is registered with the Department of Education as a private higher education institution under the Higher Education Act, 1997. Registration certificate no. 2003/HE08/01 to offer the programmes listed thereon.

Belgium Campus 1 ITversity NPC is registered to offer accredited programmes at the following sites of delivery;

- A. Pretoria: 138 Berg (6th) Avenue, Heatherdale, Akasia, Pretoria, 0182
- B. Kempton Park: 45A Long Street, Kempton Park, 1619
- C. Port Elizabeth: 6 Uitenhage Road, North End, Port Elizabeth, 6056

Belgium Campus 1 ITversity NPC is registered to offer the following programmes, which are approved by the Registrar in terms of section 53(1)(b) of the Act and Regulation 20 until 31 December 2020:

- Diploma in Information Technology (HEQSF Aligned, NQF Level 6, 360 Credits, Contact Mode) [A, B, C]
- Bachelor of Information Technology (Software Development) (HEQSF Aligned, NQF Level 7, 360-Credits: Contact Mode) [A, B, C]
- Bachelor of Computing (HEQSF Aligned, NQF Level 8, 480-Credits: Contact Mode) [A, B, C]

Staff

Directors

Enrico M. Jacobs, Jan K.M. Rombouts

Members

H. Steels, N. Rombouts, B. Ntuli, S. Ntuli, W. Indeherberge, J.K.M Rombouts, E.M. Jacobs

Dean: Faculty of Information Technology

Kris Willems

Administrative Dean: Faculty of Information Technology

Thinus Kritzinger

Academic Staff:

Cheteni	Eddy	M.Sc Operations Research and Statistics
Chiruka	Matildah	Dip. Ed,B.sc Applied Mathematics and Statistics
Delport	Cindy	Diploma in Information Technology, B.Ed.
Dzanza	Richmore	M.Sc Operations Research and Statistics
Hood	Raymond	Diploma in Information Technology
Joy	Anila	Msc. Computer Science
Kajengo	Cosmas	BSc. Computer Science (Hons)
Kritzinger	Thinus	Bachelor of Computing, N Dip. Applied IT
Loni	Xolani	B. Tech(Information Technology), PG.Dip Education
Magorimbo	Melary	B.Sc. Hons. (Business Information Systems)
Matekaire	Kudzayi	BBA in Computer and Management Information Systems
Mathebula	Lawrence	B.Sc. Hons. (Computer Science)
McIntyre	Duncan	Bachelor of Computing
Mhlabani	Sibusiso	B.Sc. Computer Systems
Mkwaira	Tendai	BSc. Computer Science (Hons)
Mpofu	Bekithemba	B.Sc. Hons. (Information Systems)
Mudare	Gift	Bachelor Science (Hons) Computer Science
Mukaro	Walter	B.Sc. Hons. (Informatics)
Ncube	Sinini	M.Sc Computer Science
Ngoveni	Nsuku	B.Sc. Hons. Computer Sciences
Oluwadele	Deborah	M.Sc. Information Technology
Schoeman	Surani	Bachelor of Computing
Shayamano	Eva	Bsc (Hons) Computer Science
Smit	Francois	Bachelor of Computing
Steyn	Gerhard	D.Ed.
Sundire	Desire	Bsc (Hons) Computer Science
Tapfuwa	Dzidzai	B.Sc. (Computer Science), CCNA, Oracle Certified Professional Java Programming
Tavagwisa	Charmaine	Bachelor of Engineering (Hons.) in Electronic Engineering
van Wyk	Quintin	Bachelor of Computing
Venter	Francois	Bachelor of Computing, N. Dip. (Computer Systems Engineering)
Welgemoed	Andre	Bachelor of Computing
Willems	Kris	PhD. (Biological Sciences)
Zaaiman	Jannie	BCom, BProc, HBA, MBA, PhD
Zengani	Simba	B.Sc. Hons. Computer Sciences

Guest Lecturers

Johan Cleuren	D.Sc. (Biological Sciences)
Bertus Bekker	B.Sc. Hons. (Computer
Danie Strydom	Industry IT Specialist
Johan Cronje	Industry IT Specialist
Piet Wiid	Industry IT Specialist
Adriaan Ray	Industry IT Specialist
Sean McLean	Hons.BA (Economics and
Johann Prins	M.Sc.
Lional Pfaff	Industry IT Specialist
Marianne Du Bois	M.Ed.
Caroline Lauwerier	B.Ed.
Marco Jennen	B.Ed.
Anne Hansen	B.Ed.
Wim Claeys	Civil Engineer
Nina Roos	B.Sc. Hons. (Psychology)
Zwonaka Netshikwati	B.Sc. Hons. (Psychology)
Alisha Narine	B.Sc. Hons. (Psychology)
Jan Goffing	Bachelor in Applied Informatics
Robert Rogers	B.Comp.

Partnership agreements

The Belgium Campus currently has the following agreements in place with partnering universities:

- MOU - Establishing a Consortium of Universities with
 - The Catholic University College Leuven Limburg, Belgium
 - The Cape Peninsula University Of Technology, South Africa
 - The University of Venda, South Africa
- MOA – Institutional and Community development with The Catholic University College Leuven Limburg, Belgium

Contact Details

Office Hours

Our admin offices are open Mondays to Fridays from 08:00 to 17:00 at Kempton Park and Port Elizabeth and 07:30 to 17:30 at the Pretoria campus.

Postal address
PO Box 60327
Karen Park
0118

Tshwane Campus (Head Office)

138 Berg (6th) Avenue
Heatherdale
Pretoria
Gauteng
South Africa
GPS: -25.683115, 28.131177

Tel: 012 542 3114
010 593 5368
Fax: 012 542 1617
086 564 3043

Nelson Mandela Bay Campus

6 Commercial Road
North End
Port Elizabeth
Eastern Cape
South Africa
GPS: -33,924609, 25,603412

Tel: 012 542 3114
010 593 5368
Fax: 012 542 1617
086 564 3043

Ekurhuleni Campus

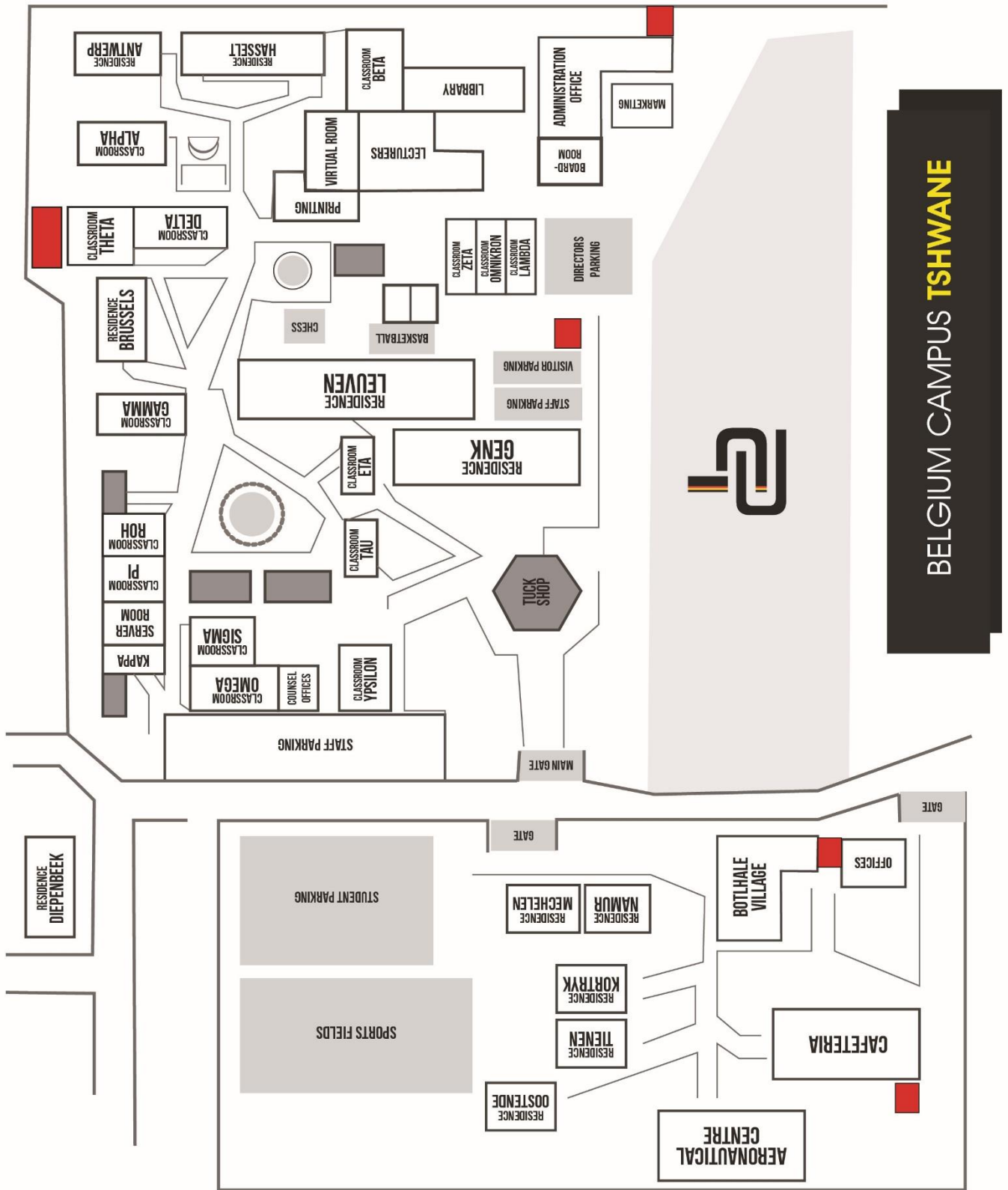
45A Long Street
Kempton Park
Gauteng
South Africa
GPS: -26.106031, 28.238295

Tel: 012 542 3114
010 593 5368
Fax: 012 542 1617
086 564 3043

Digital Contact Details:

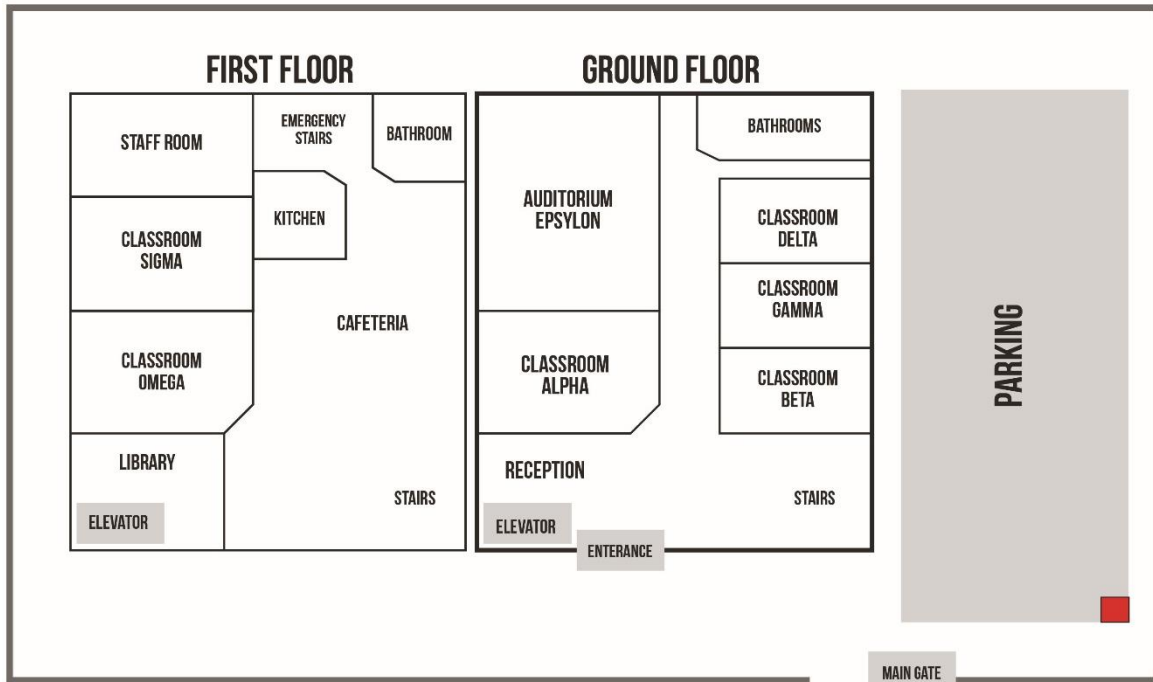
Email: info@belgiumcampus.ac.za
Website: www.belgiumcampus.ac.za
Facebook: [@BelgiumCampusSA](https://www.facebook.com/BelgiumCampusSA)
Twitter: [#BelgiumCampus](https://twitter.com/BelgiumCampus)
YouTube: [BelgiumCampus](https://www.youtube.com/BelgiumCampus)

Tshwane campus map (head office)



BELGIUM CAMPUS TSHWANE

Ekurhuleni campus



BELGIUM CAMPUS EKURHULENI

Nelson Mandela Bay campus



BELGIUM CAMPUS NELSON MANDELA BAY